

# 2014/15 Plan of Work

Neil Stephens

# Current Position

## Priority sectors

**Small Sites (35%) – 45% delivered**

**Refurbishment (25%) – 36%**

**Asbestos (20%) – 12%**

**Major Projects & Large Contractors (5%) - 1%**

**Local Priorities (15%) – 6%**

## 2013/14 - Updates

**Priority sectors remain with slight change and added in home build**

**Small Sites (35%)**

**Refurbishment (30%)**

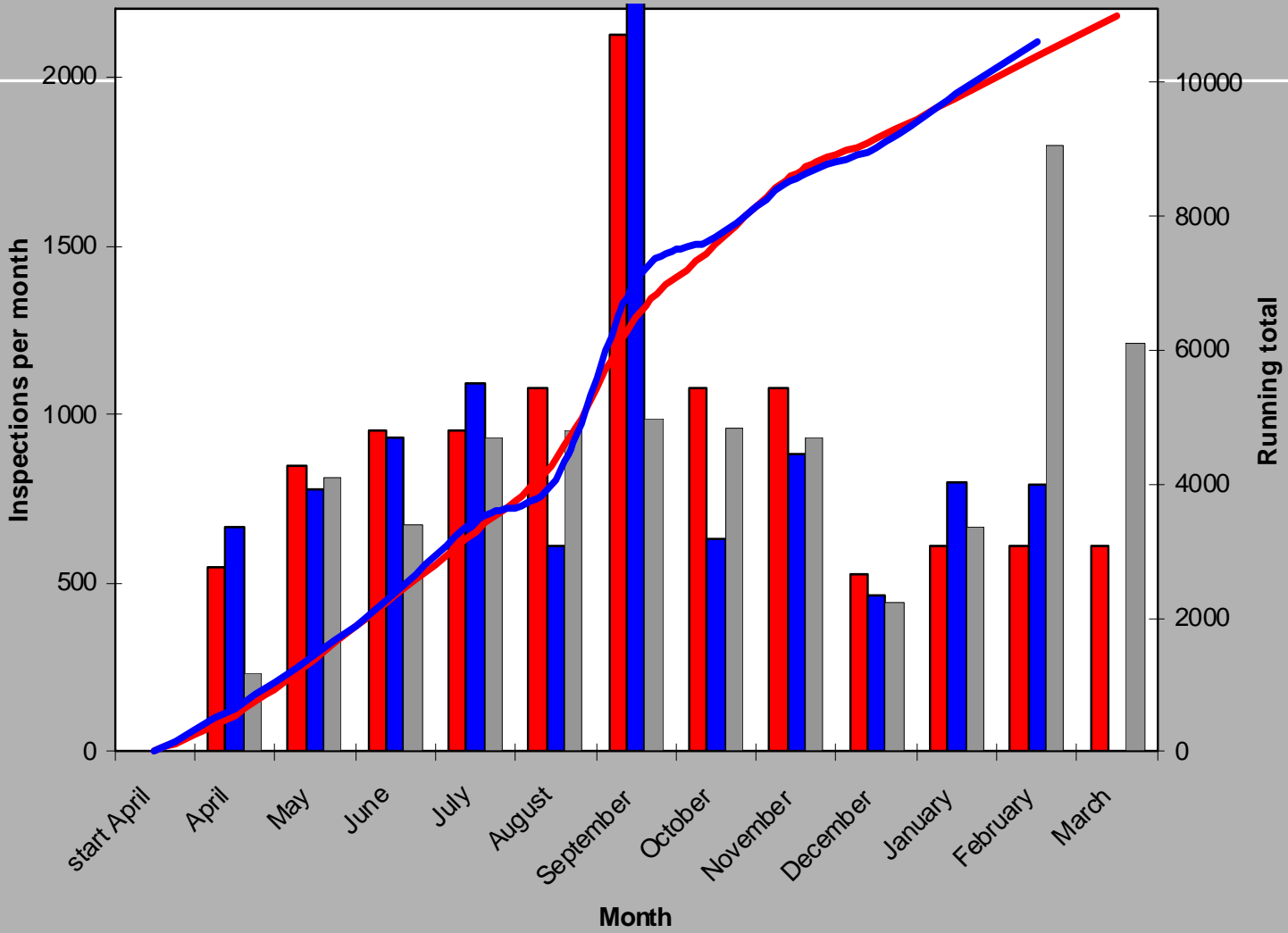
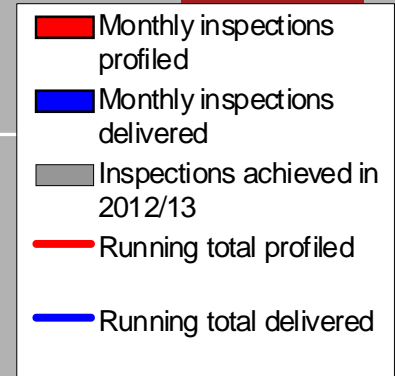
**Asbestos (11%)**

**Home build (5%)**

**Major Projects & Large Contractors (5%)**

**Local Priorities (15%)**

# Proactive Inspection Profile and Performance 2013/14



# Key Themes for 2014/15.....

- Start a step change in Occupational Disease and ill health **prevention**
- Promote CDM messages, e.g.
  - Role of Client
  - Reduce paperwork
- Track-back to CDM duty holders
- Promote involvement in CDM 2015 consultation
- Continue support for WWT
- Promote LWIT as a tool for improvement
- Notify illegal employment of Migrant workers

# Approach to visits remains same

- Matters of Evident Concern
  - Inc' migrant workers
- Matters of potential major concern, e.g.
  - Structural collapse
  - Fire
  - Cranes & lifting
- Normal visit priorities
  - Asbestos, Respiratory Risks, WAH, Manual Handling, Site Transport, Public Protection, noise and vibration.....



# Inspection initiative

- 2607 Sites inspected
- Approx 40% FFI action applied
- Excellent regional media coverage
  - Use of social media
- **2014/15 will take place in mid September to mid October**
- Aim to deliver 2000 inspections



# New work for 2014/15

- **Health Inspection Initiative**
  - Starts 23rd June (TBC) – 2 weeks
  - 500 inspections
  - Larger sites
  - **Focus on:**
    - Hazardous substances (COSHH)
    - Manual handling
    - Noise & vibration
    - Welfare
    - Examine health management and role of client/designer/CDM-C if appropriate

# New work for 2014/15

- **Home building**
  - Inspection of up to 500 larger sites throughout year
  - **Focus on:**
    - Hazardous substances
    - Manual handling
    - Noise & vibration
    - Transport management
    - Supervision
    - Welfare

# New work for 2014/15

- **Loft conversions**
  - Inspection of up to 100\* sites
  - **Focus on:**
    - WAH
    - Asbestos
    - Manual handling
    - Protecting the public
  - Duty holder event – minimum 1 per unit





## New work for 2014/15

- **Commercial solar panel installation**
  - Inspection of up to 100\* sites
  - Focus on:
    - WAH, inc' fragile materials
    - Asbestos
    - Manual handling
    - Client role
  - Duty holder event – minimum 1 per unit (CITB Info Sheet).



# 2014/15 Continuing Work

- Fragile Materials

- Inspection by CD; inc,
  - 250 Commercial roofing
  - Construction on farms
- Inspection FOD - continues
- Estates Excellence events
- Busy Builder Sheets
- WWT SHADs
- **EXAMINATION OF CLIENT ROLE IN ALL VISITS.**



## 2014/15 Continuing Work

- **Improving Leadership via LWIT**
  - Current IDHC programme to be wound down
- Replace with:
  - Each FMU to organise an LWIT briefing for local duty holders (10-15 attendees)
  - They create an action plan
  - Follow-up with attendees 3 months later
  - Decide on further action

## 2014/15 Continuing Work

- Large contractor interventions
  - Top 30\*, includes -
    - Leadership (directors)
    - Health management
    - Emerging from recession – supervision
- TDS
  - 40 site inspections
- Timber Frame Buildings
  - 40 site inspections

# Summary

- 11,000 inspections
  - 35% Small Sites
  - 30% Refurbishment
  - 11% Asbestos
  - 5% Home build
  - 5% Major projects & large contractors
  - 15% Local priority
- Sept/Oct Inspection initiative – 2000 inspections
- June - Health Inspection Initiative – 500 visits
  - Look at systemic failings / CDM duty holders

# Summary con't

- Home Build – 500 inspections
- Fragile Roofs
  - All\* commercial roof work
  - Construction on farms\*
  - Include in any industry talks
  - **Incidents - mandatory client investigation**
  - *Record on case speciality type*
- 40 Timber Frame interventions
- 40 TDS interventions

# Summary con't

- **Loft Conversions**
  - Up to 100 visits
  - Unit event
  - *Busy builder sheet*
- **Commercial Solar Panel Installers**
  - Up to 100 visits
  - Unit event
  - Client role