
Asbestos – “still out there – still a killer”

Ed Fryer

HM Inspector of Health and
Safety, Birmingham

What is asbestos?



Chrysotile or 'white'
asbestos

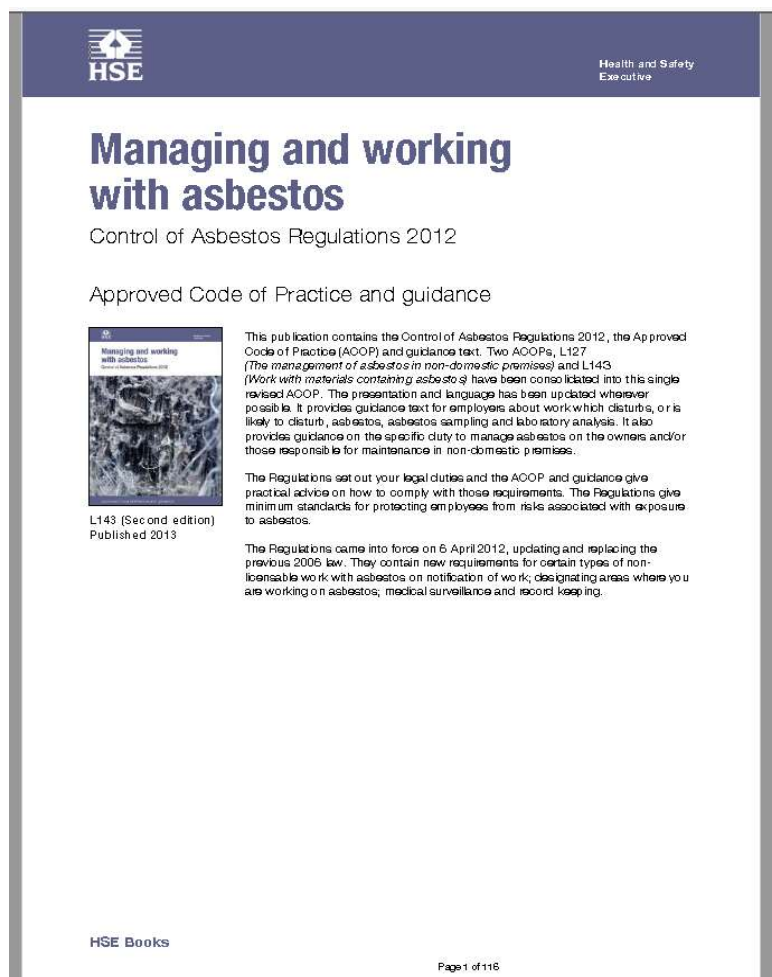
Amosite or 'brown'
asbestos

Crocidolite or 'blue'
asbestos

What is asbestos?

- Class I carcinogen
- Banned for import and use under REACH (and whatever its Brexit replacement is)
- Is subject to the Control of Asbestos Regulations 2012
- Has a control limit of $0.1\text{f}/\text{cm}^3$
- Has an approved concentration of $0.6\text{f}/\text{cm}^3$
- Has a licencing regime

What is Asbestos?



The screenshot shows the HSE website page for 'Managing and working with asbestos'. The page header includes the HSE logo and 'Health and Safety Executive'. The main title is 'Managing and working with asbestos' with the subtitle 'Control of Asbestos Regulations 2012'. Below this, it states 'Approved Code of Practice and guidance'. There is a small image of the book cover for 'Managing and working with asbestos' (L143). The text describes the publication, which contains the Control of Asbestos Regulations 2012, the Approved Code of Practice (ACOP) and guidance text, and L143. It mentions that two ACOPs, L127 (The management of asbestos in non-domestic premises) and L143 (Work with materials containing asbestos) have been consolidated into this single revised ACOP. The text also states that the Regulations set out legal duties and the ACOP and guidance give practical advice on how to comply with those requirements. The Regulations give minimum standards for protecting employees from risks associated with exposure to asbestos. Finally, it notes that the Regulations came into force on 6 April 2012, updating and replacing the previous 2005 law. The page footer includes 'HSE Books' and 'Page 1 of 116'.

- Has an Approved Code of Practice
- Free to download
- Visit the HSE website at:
<http://www.hse.gov.uk/pubns/books/l143.htm>

What does asbestos look like?



HOW SMALL IS ASBESTOS?

2 grains of rice



20,000 asbestos fibres



Download free resources to find out about asbestos and how to manage it at www.notimetolose.org.uk

Source: www.asbestosdiseaseawareness.org/wp-content/uploads/Penny-Slide.jpg

Actual



What does it do?

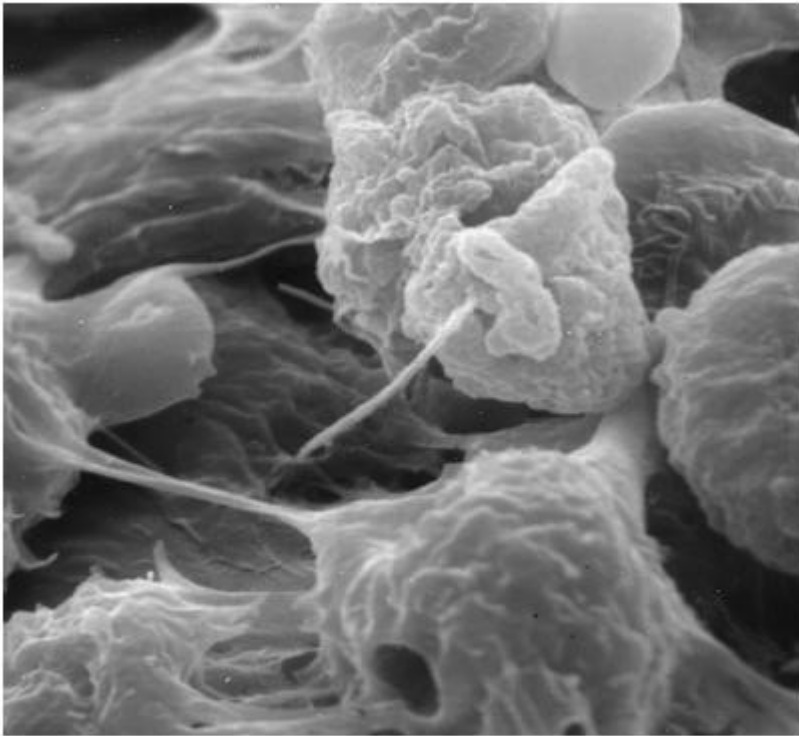
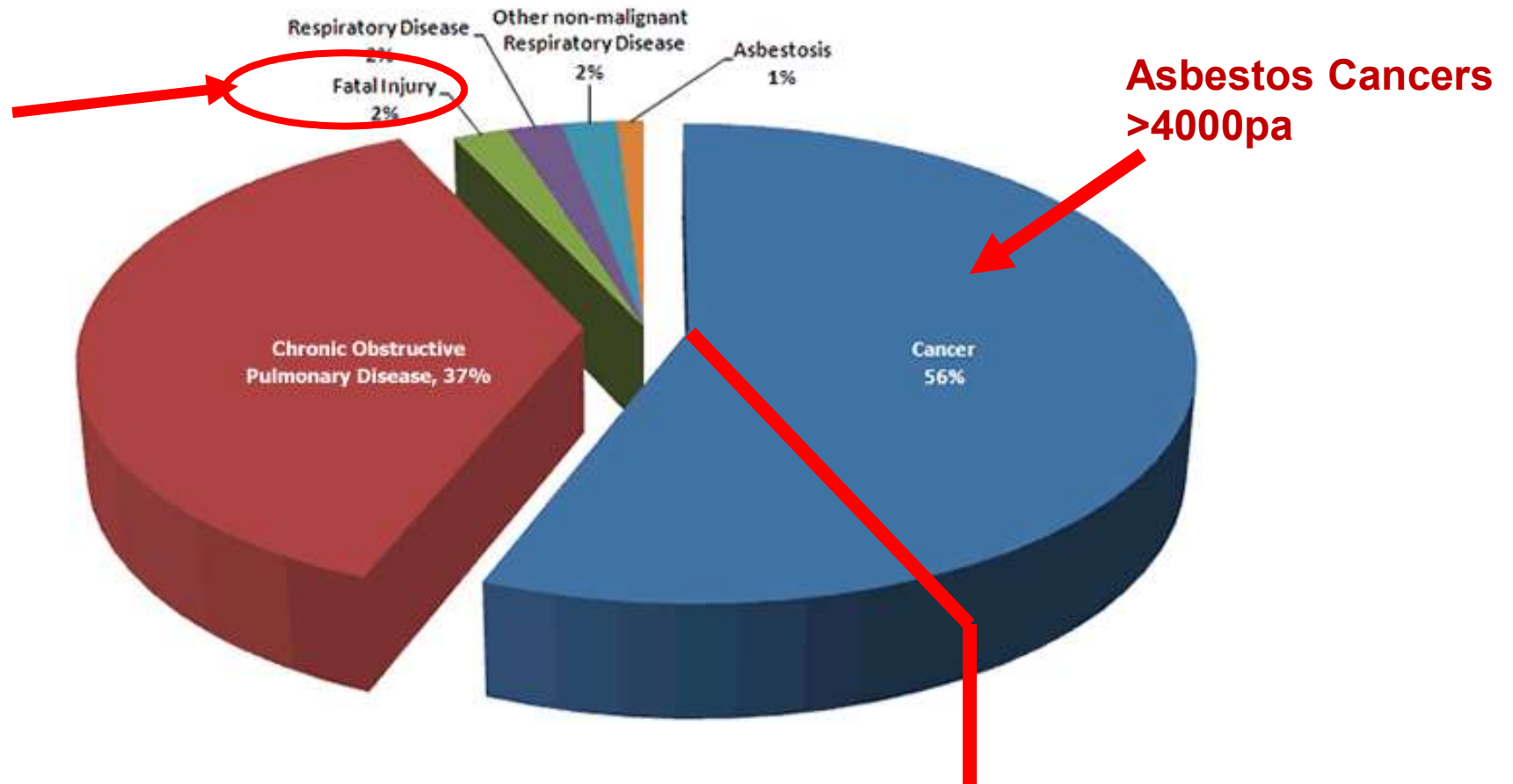


Figure 2.1. Scanning electron microscopy showing phagocytosis of long asbestos fibers by alveolar macrophages.

- Mesothelioma
- Asbestos related lung cancer
- Asbestosis
- Pleural thickening

Annual work-related deaths (estimated 8000-12000)



Where is Asbestos?

- **Various estimates**
 - **0.5 - 2m industrial / commercial buildings**
 - **2.4 m domestic premises**

What Asbestos Training?



- 3 Types
 - Asbestos awareness
 - Non-licensable work with asbestos including NNLW
 - Licensable work with asbestos

Who is at risk?.. “Hidden Killer” campaign



HSE

Every week 20 tradesmen die from this hidden killer.

Any building built or refurbished before the year 2000 could contain asbestos, which is one of the most lethal dangers in the workplace. Every year there are still 4,000 deaths from asbestos related diseases – you could be working where asbestos is present right now. Don't you owe it to your workmates, your family and yourself to find out more?

Call 0845 345 0055 now for your FREE Asbestos Information Pack.

Health and Safety Executive www.hse.gov.uk/asbestos

Don't chance it
CHANGE IT

HSE

Every week 6 electricians die from this hidden killer.

Any building built or refurbished before the year 2000 could contain asbestos, which is one of the most lethal dangers in the workplace. Every year there are still 4,000 deaths from asbestos related diseases – you could be working where asbestos is present right now. Don't you owe it to your workmates, your family and yourself to find out more?

Call 0845 345 0055 now for your FREE Asbestos Information Pack.

Health and Safety Executive www.hse.gov.uk/asbestos

Don't chance it
CHANGE IT

HSE

Every week 3 plumbers die from this hidden killer.

Any building built or refurbished before the year 2000 could contain asbestos, which is one of the most lethal dangers in the workplace. Every year there are still 4,000 deaths from asbestos related diseases – you could be working where asbestos is present right now. Don't you owe it to your workmates, your family and yourself to find out more?

Call 0845 345 0055 now for your FREE Asbestos Information Pack.

Health and Safety Executive www.hse.gov.uk/asbestos

Don't chance it
CHANGE IT



Any Questions?